

# Product Recommendation System using Machine Learning

Pallavi S. Bangare<sup>1</sup>, Vinay Jain<sup>2</sup>, Akshay Kulkarni<sup>3</sup>, Pulkit Lawas<sup>4</sup>, Abhijeet Sambvekar<sup>5</sup>

Department of Information Technology<sup>1,2,3,4,5</sup>, Sinhgad Academy of Engineering<sup>1,2,3,4,5</sup>

Email: pallavi.bangare@gmail.com<sup>1</sup>, jain.vinay550@gmail.com<sup>2</sup>

**Abstract-** Dynamic Recommendation is the most imperative component in any sort of online client driven application. Such Systems are utilized to expand the development of online organizations. If there should arise an occurrence of a business endeavour client's information is accessible in expansive volume of information. With the goal that they can perform different information mining calculation to extricate the fundamental information. Hence this concentrates information can be valuable to discover client's particular propensities, buy designs, clients most loved classification and utilizing this sort of data proposal frameworks computes recommendation for client. In the event that these proposals are up to the stamp then it in the long run expands client's advantage. This framework when actualized on a similarly new Hyper-Local Based Services showcase, it would help develop this market. This system can give a customized recommendation through GPS. just in case wherever user couldn't build a dealing of a selected project as a result of any reason so if he or she is passing by a selected space which product that user couldn't convert into sale is obtainable at that specific location then user is going to be notified that the merchandise that you were searching for is obtainable close to you.

**Index Terms-** Recommendations; Hyper-Local Based Service; SQL database; Android; GPS Recommendation; Naive Bayes' Algorithm; Java Swing; Java Desktop Standalone Application

## 1. INTRODUCTION

This framework is principally partitioned into three sections, for example, Admin Side, Server running different Services and a client side Android App. Administrator side desktop independent application helps all the item administration exercises, for example, include items, expel items, seek items and so forth. This application store this information in a social open source database MySQL. Server runs all the required administrations for the suggestion framework. These administrations get called as and when required. It is a decent practice to utilize a different administration handler for various administrations prerequisites. At that point, a customer side Android application completes the handling from client. All client particular operation, for example, seeing the items, select and purchase item are performed in an android application. All the client activities are recorded and sent to database for figuring reason [1]. Count are performed utilizing Naive Bayes' Theorem and shown in a recommendation tab.



Figure 1: Architecture

## 2. RECOMMENDATIONS FOR HYPER-LOCAL BASED SERVICE

This Hyper-Local based administration is similarly new type of trade occurred utilizing web. It makes utilization of a circulated and right now accessible neighbourhood advertise. Be that as it may, the issue with this is, to deal with a cool begin issue. Information accessible is so less nearly to the internet business division which in terms make suggesting operations less prescient [5]. To adapt up to this issue a Naive Bayes' Algorithm is connected to the dataset. Parameters which are considered while ascertaining suggestions are class ID, look check, client appraisals for a particular item and tally of the preferences given to a particular classification item [2]. This dataset discovers client's purchasing propensities. With the assistance of this data proposals are figured. Few Image processing application based work was studied [22] [23] [24]. For measuring the quality and the mobile app based papers were studied [25] [26] [27] [28].

## 2.1 Android App

The customer side applications is produced utilizing android improvement condition. The purpose for choice of this specific condition is its immeasurable client base. Number of clients utilizing android advanced cells untouchables other stage with gigantic distinction. It is essentially a direct result of a steady domain which android gives. Client side application handles exercises, for example, login, make clients, show information. Client sees distinctive accessible items and chooses the required. Client particular information, for example, look history, classification like number, appraisals for a particular class is recorded by means of this customer side application [7]. This recorded data is passed as parameters for proposal computation.



Figure 2: Login Activity



Figure 3: View Product Screen

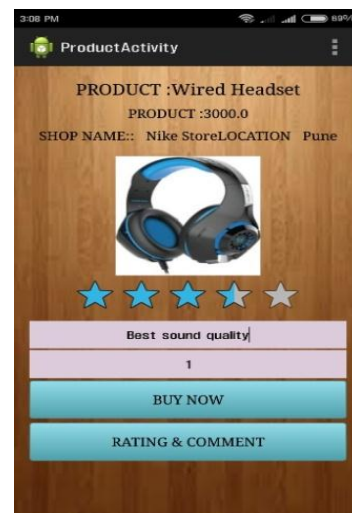


Figure 4: Product Buy Screen

## 2.2 Admin Application

This application is for administration reason. All the recorded items are overseen utilizing this desktop independent application. Java Swing is utilized to create administrator application. Swing library is an official Java GUI toolbox discharged by Sun Microsystems. It is utilized to make Graphical UIs with Java. Attributes of the Swing toolbox are stage free, extensible, adaptable, lightweight and configurable. Swing is a propelled GUI toolbox. It has a rich arrangement of gadgets. From essential gadgets like catches, names, scrollbars to cutting edge gadgets like trees and tables. Swing itself is composed in Java.

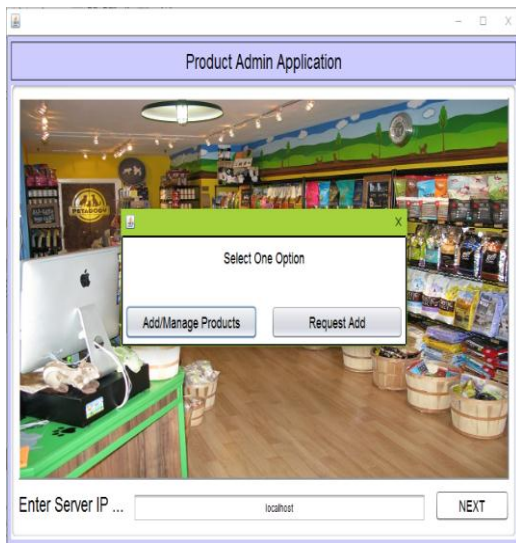


Figure 5: Admin Connection Screen

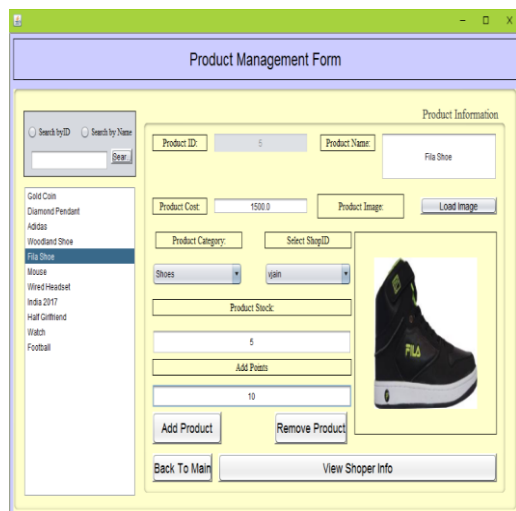


Figure 6: Admin Application Manager Screen

### 2.3 kSOAP

In this kSOAP library is utilized to parse WSDL (Web Service Definition Language) and SOAP (Simple Object Access Protocol) messages. KSOAP was uniquely was outlined or created to manage little installed gadget like cell phones. Cleanser can be an extremely complex domain to investigate, particularly the XML components used to exchange information between divergent frameworks, dialects, and toolboxes. The remote world requires devices of little stature and awesome power. Fortunately, with regards to SOAP, the kSOAP toolbox gives little size and awesome usefulness, as well as relative effortlessness and convenience for the engineer. Utilizing kSOAP, an engineer can create complex SOAP Web administrations customers in an amazingly brief time. KSOAP is a "lightweight and productive SOAP library for the Android stage[2]. "Cleanser" is a

convention utilized for building web administrations, and which characterizes an arrangement utilized for the trading of messages that utilizes XML as base.

### 2.4 SQL Database

It is an Open source social database use to store all the required data of item and in addition client's information. Item subtle elements, for example, Product Name, Cost of the item, Product Image (figured pixel estimations of a picture). Client particular information is likewise put away. Such sort of information incorporates values, for example, Users seek check, similar to number, evaluations given to the items. These put away values are utilized as parameters for Naive Bayes' Algorithm which additionally computes suggestions. Each client adds to this framework by including contribution of their shopping. This framework indicates redress suggestions as client history parameters increments exponentially.

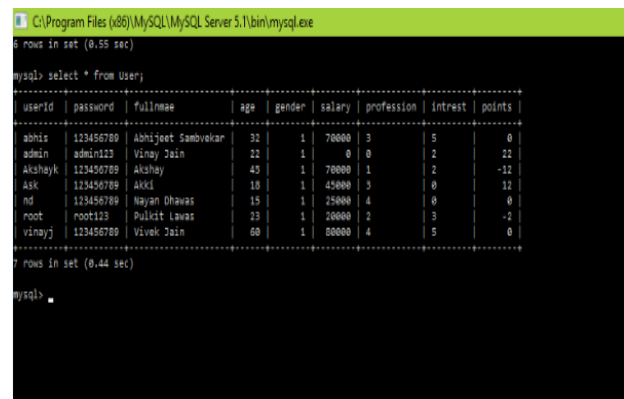


Figure 7: User History Screen

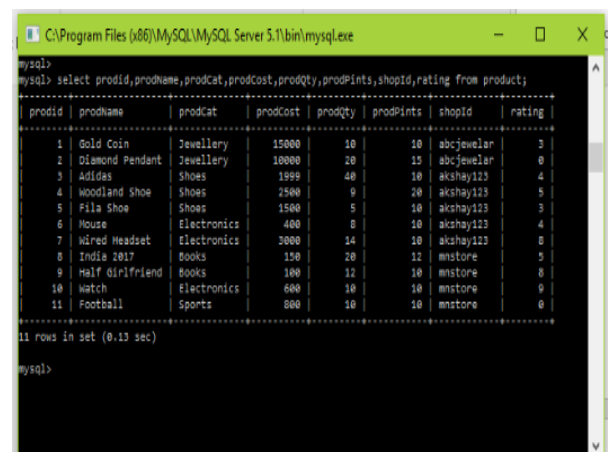


Figure 8: Product Details Screen

### 2.5 Personalized recommendation through GPS

This system can give a customized recommendation through GPS. just in case wherever

user couldn't build a dealing of a selected project as a result of any reason so if he or she is passing by a selected space which product that user couldn't convert into sale is obtainable at that specific location then user is going to be notified that the merchandise that you were searching for is obtainable close to you. For the implementation of this customized recommendation through GPS the latitude and longitude of a user are captured and it will compare with the latitude and longitude keep within the information and if each the latitude and longitude matches then the user will have a notification of an accessibility of a product at that location.

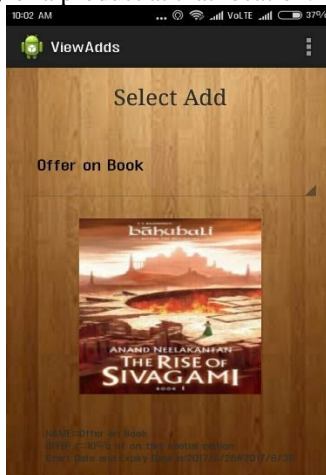
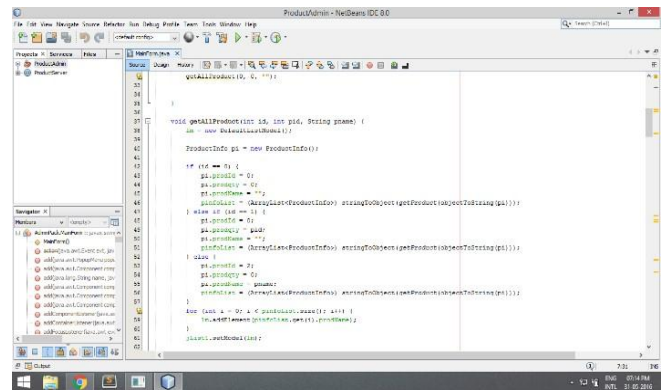


Figure 9: Shop offer Screen

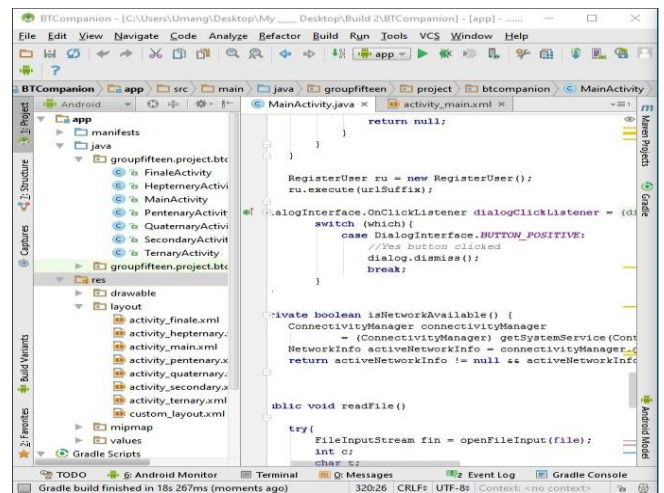
### 3. DEVELOPMENT

UML was used for the design phase[10]. Machine Learning is the latest trend to solve the real world problems work of [11] [12] [13] [14] [15] [16] was studied. For Security, Software Designing, Social Networking and online issues work of [17] [18] [19] [20] [21] was studied. For building up this whole framework a cluster of Integrated Development Environment (IDE) are utilized. For example, Net beans 8.0 for Admin application and also to deploy a server. Server keeps up an arrangement of utilization particular administrations. Netbeans has an altogether different UI and work process. There are no points of view, yet toolbars and such will auto show up/stow away as required (i.e. troubleshooting). Netbeans concentrates on a smooth, incorporated ordeal at times to the detriment of components.



1.1. Figure 10: Net Beans IDE for Product Admin

Android Studio IDE was used for Android app development, primarily because it is the recommended platform to develop Android applications on and is also very easy and convenient to use. The GUI design is easy to make by providing a layout editor with drag and drop functionality. The built-in tools make it easy to spot possible error conditions and provide fixes.



1.2. Figure 11: Android studio for User App

### 4. ALGORITHM

#### 4.1 Naive Bayes Classifier

A naive scientist classifier may well be a straightforward probabilistic classifier supported applying Bayes' theorem with durable (naive) independence assumptions. An additional descriptive term for the underlying chance model would be "independent feature model".

Depending on the precise nature of the chance model, naive mathematician classifiers are often trained terribly with efficiency in an exceedingly supervised learning setting. In several sensible applications, parameter estimation for naive

mathematician models uses the strategy of most likelihood; in different words, one will work with the naive mathematician model while not basic cognitive process in theorem chance or victimization any theorem ways.

An advantage of the naive Bayes classifier is that it only desires as small low amount of employment info to estimate the parameters (means and variances of the variables) necessary for classification. as a results of freelance variables ar assumed, only the variances of the variables for each class got to be determined and not the whole variance matrix.

#### 4.2 The Naive Thomas Bayes Probabilistic Model

Abstractly, the likelihood model for a classifier could be a conditional model

$$p(C|F_1, \dots, F_n)$$

over a dependent category variable C with atiny low range of outcomes or categories, conditional on many feature variables F1 through Fn. the matter is that if {the range|theamount|the quantity} of options n is massive or once a feature will strive against an oversized number of values, then basing such a model on likelihood tables is impossible. we have a tendency to thus formulate the model to create it additional tractable.

Using Bayes' theorem, we write

$$p(C|F_1, \dots, F_n) = \frac{p(C) p(F_1, \dots, F_n|C)}{p(F_1, \dots, F_n)}$$

In plain English, the higher than equation are often written as

$$\text{posterior} = \frac{\text{prior} * \text{likelihood}}{\text{evidence}}$$

#### 5. BENEFITS

- Recommendations builds client encounter.
- Works with effectively existing substantial client based PDA condition Android.
- Feasible to actualize on different stages, for example, web, iOS, windows due to XML portrayal of information.
- Admin side application is less demanding to use for not all that actually stable retailer.

- Can be effectively incorporated with different stages.

#### 6. CHALLENGES

- Admin applications should be introduced at each neighbourhood shop.
- System is outlined considering Android advanced mobile phone as a client application.
- Cold begin issue, as unlimited volume of information is not accessible at begin.

#### 7. FUTURE SCOPE

The plan and execution of this venture has helped nearby organizations develop practically. Right now, the proposal calculations are not the issue, but rather the whole design of how we produce suggestions. It is exceptionally gullible to expect that per-client proposals would be the thing to do, in light of the fact that it depends on innocent presumption of the clients being static, while they are dynamic. In this quick moving condition suggestion framework ought to likewise coordinate with client. This framework can be coordinated with different stages when required. There is no compelling reason to outline whole framework without any preparation for another stage like iOS or windows in light of the utilization of XML, only a User Interface needs to make for that stage.

#### 8. CONCLUSION

In This, proposals framework develops deals if claims recommendations are shown for clients. Hyper-Local Services can get a colossal measure of advantage by utilizing this framework. For development reason a consistent client base which is expanding exponentially is a prerequisite.

#### Acknowledgments

We are thankful to Prof. A. N. Adapanawar, HOD-IT and Dr. K. P. Patil, Principal, Sinhgad Academy of Engineering for their support. Also thankful to Prof. Sunil L. Bangare, Dr. G. Pradeepini, Dr. S. T. Patil for their guidance.

#### REFERENCES

- [1]RutujaTikait, RanjanaBadre and MayuraKinikar, "Product facet Ranking Techniques A Survey", IJIRCCCE, Nov 2014.
- [2] Sahil Pathan, "Recommendation System Application using Naïve Bayes Algorithm", IJIRT, Volume 3 Issue 1, ISSN: 2349-6002 , June 2016.
- [3] J.B. Schafer, J.A. Konstan, and J.Reidl, "E-Commerce Recommendation Applications,"

- process and information Discovery, Kluwer tutorial, 2001, pp. 115-153.
- [4] P. Resnick et al., "GroupLens: Associate in Nursing Open design for cooperative Filtering of Netnews," Proc. ACM 1994 Conf. laptop Supported Cooperative Work, ACM Press, 1994, pp. 175-186.
- [5] Yang, C.C., Wong, Y.C., Wei, C.P.: Classifying web review opinions for consumer product analysis. In: Proc. of the 11th International Conference on Electronic Commerce. pp. 57{63. ACM, New York, NY, USA (2009).
- [6] B.M. Sarwarm et al., "Analysis of advice Algorithms for E- Commerce," ACM Conf. Electronic Commerce, ACM Press, 2000, pp.158-167.
- [7] L. Ungar and D. Foster, "Clustering Methods for Collaborative Filtering," Proc. Workshop on Recommendation Systems, AAAI Press, 1998.
- [8] B.M. Sarwar et al., "Item-Based Collaborative Filtering Recommendation Algorithms," tenth Int'l World Wide Net Conference, ACM Press, 2001, pp. 285-295.
- [9] Yang, C.C., Wong, Y.C., Wei, C.P.: Classifying internet review opinions for client product analysis. In: Proc. of the 11<sup>th</sup> International Conference on Electronic Commerce. pp. 57{63. ACM, New York, NY, USA (2009).
- [10] Magar, Anand Mohanrao, and Nilesh J. Uke. "Use of AST for Translating Executable UML Models to Java Code in Eclipse and Testing Strategy for UML Models." *International Journal of Innovative Technology and Exploring Engineering (IJITEE)* 3.7 (2013): 157-160.
- [11] Rathod, Aakash, Nitika Sinha, and MrsPankajaAlappanavar. "Extraction of Agricultural Elements using Unsupervised Learning." *Imperial Journal of Interdisciplinary Research* 2.6 (2016).
- [12] Jain, Jyoti, et al. "Sentiment Analysis Using Supervised Machine Learning." *Imperial Journal of Interdisciplinary Research* 2.6 (2016), ISSN: 2454-1362.
- [13] NiharSuryawanshi, et al. "Sentiment Analysis Using Machine Learning." *Imperial Journal of Interdisciplinary Research* 6.1 (2016), pp.451-453.
- [14] Kumar, Samarth, et al. "Stock Market Forecasting using Hybrid Methodology." *Imperial Journal of Interdisciplinary Research* 2.6 (2016).
- [15] A. Sutar and P. Y. Pawar, "Load Balancing With Third Party Auditor", International Engineering Research Journal (IERJ), 2.3 (2016), pp.1156-1160.
- [16] A. Mishra, et al., "DDOS Attack Detection and Multivariate Correlation Analysis and Clustering", IJSTE, 2.12 (2016).
- [17] M. K. Nivangune et al, "Secured Online Voting System over the Network", International Engineering Research Journal (IERJ), 2.3 (2016), pp.1380-1383.
- [18] Yalla, Prasanth, and Nakul Sharma. "Integrating Natural Language Processing and Software Engineering." *International Journal of Software Engineering and Its Applications* 9.11 (2015): 127-136.
- [19] Yalla, Prasanth, and Nakul Sharma. "Utilizing NL Text for Generating UML Diagrams." *Proceedings of the International Congress on Information and Communication Technology*. Springer Singapore, 2016.
- [20] Mane, Tushar, and Laxman Deokate. "The Real Social Networking Website.", International Journal of Advanced Technology & Engineering Research (IJATER), 3.1 (2013), pp.36-42.
- [21] Lathkar, Shilpa G., Nilima A. Kavitke, and Abhay N. Adapanawar. "Online Digital Advertising on Public Display." *International Journal of Computer Applications* 66.10 (2013).
- [22] Sunil L. Bangareet al. "Implementing Tumor Detection and Area Calculation in MRI Image of Human Brain Using Image Processing Techniques." *International Journal of engineering Research and Applications* 1.5: 60-65.
- [23] Sunil L. Bangare, et al. "Reviewing Otsu's Method for Image Thresholding." *International Journal of Applied Engineering Research* 10.9 (2015): 21777-21783.
- [24] Pallavi S. Bangare, et al. "Implementation of abandoned object detection in real time environment." *International Journal of Computer Applications* Vol.57, Issue.12 (2012).
- [25] Sunil L. Bangare, et al. "Quality measurement of modularized object oriented software using metrics." *Proceedings of the International Conference & Workshop on Emerging Trends in Technology*. ACM, 2011.
- [26] Kotwal, Priya A., et al. "A Location Tracer With Social Networking Services." *International Journal of Engineering and Technology (IJET)* 4.1 (2012).
- [27] Sunil L. Bangare, et al. "Automated API Testing Approach." *International Journal of Engineering Science and Technology* 4.2 (2012).
- [28] Sunil L. Bangare, et al. "Automated Testing in Development Phase." *International Journal of Engineering Science and Technology* 4.2 (2012).